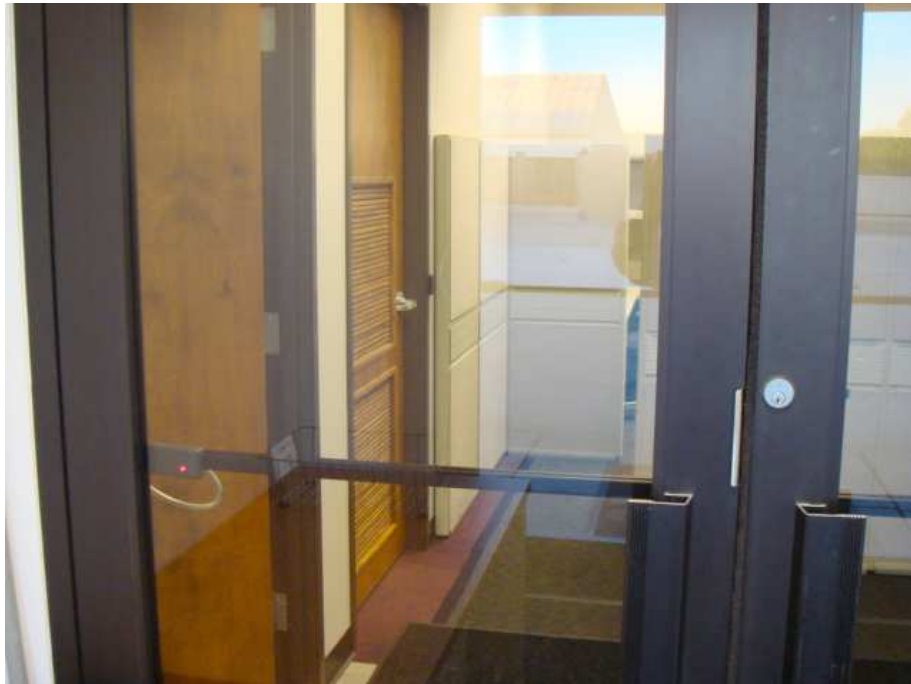


PHOTO TOUR

Main entrance to datacenter and soft areas, first set of card key doors.



Second set of card key doors (you're now inside the first man trap) to gain entrance to the soft work areas.



Example of work spaces in the 2,000 sq ft soft area, each set up for 20 meg IP and wireless



Conference room in soft area, with white board and work areas. Convenient areas to work and plan, just outside of the datacenter floor in a friendly office setting.



Kitchen, microwave, refrigerator and supplies in soft area



First Bio-hand scan to enter 2nd man trap for access to datacenter floor. Enter 7-digit pin to then proceed to bio-hand scan.



Second Bio-hand scan to exit 2nd man trap for access to datacenter floor. Man trap and cages are constructed of welded, heavy wire cage material.



Typical storage array and dense servers (12 power feeds to 3 cabinets. In this example - customer has 6th level of security, which is their own 10 X 10 cage).



APC AR3100 Net Server cabinets are the standard cabinet provided by SCG.

Within private cages, power is provisioned on cage walls. For non-caged customers the APC AR3100 cabinets are arranged in Hot / Cold isle configuration with power, fiber, and Cat 6 (1 Gig rated) cabling from above rack systems.

A traditional 42 RU cabinet includes the APC PDU power strips and necessary air conditioning to cool the power used.

Example of a Hot / Cold aisle



The entire datacenter utilizes a raised floor – the source air plenum, with 30-ton Liebert cooling units (N+1) pressurizing the floor with cold air. Ventilated floor tiles deliver cold air to the exact locations needed to cool the load.

The environment, at 5-feet off the floor, is maintained at 70 degrees F and 42 % humidity.



10 Horsepower (480 VAC), VFD Pumps (N+1) circulate the chilled water.



Non-Stop Power is an SCG standard.

Currently we have 2 utility feeds of 1.3 megawatts each, which provide primary power from two utility grids, then an additional full backup Cat 2.0 megawatt generator. This configuration provides full power, even if Ohio goes dark.



The entire building has full lightning protection, and the entire raised floor has grounding of every pedestal tying into a datacenter designed grounding plane.

All the power has utility plus generator back up (2.0 meg Cat generator with 2,500 gallons of fuel) that is then fed to multiple Liebert UPS systems giving 5 - 9's of up time.

Customers can opt to use A and B power feeds, dual corded, and achieve 7 - 9's of uptime.

Pictured below is the 2.0 meg Cat generator with 2,500 gallons of fuel



All Power is delivered from multiple Liebert UPS systems to the customer's equipment. Each UPS has at least 2 power sources: Utility and generator.

Pictured below is a Liebert 400 KVA UPS – that delivers power to the datacenter floor through multiple 150 KW load centers.



NON STOP IP

Non-Stop IP – Is SCG's standard.

In a Non-Stop facility, you would expect nothing less.

All IP Provided by SCG is BGP IP broadcasted and routed across multiple Gig routers and multiple national carriers to give our customers the non-stop IP they expect, just as a starting point.

SCG has its own ARIN assigned AS Number, and ARIN assigned IP space.

For those customers who have their own ARIN assigned IP space (C Classes) and/or AS Numbers; SCG supports customers using SCG's Gig routers and SCG's multiple-Gig access to the national carriers to deliver the required IP services (SCG is currently providing these carrier-level services for existing customers).

SCG has unlimited IP capacity, given SCG's unique location and access to all the national IP and telecom carriers.

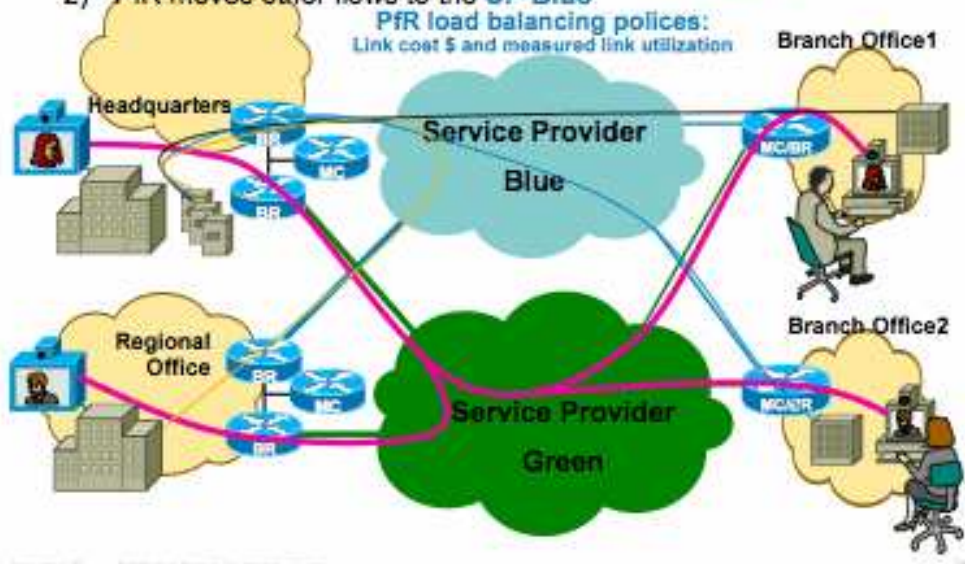
All SCG IP transport, if purchased from SCG, is BGP4 IP with Cisco's enhanced Performance Routing across multiple-gig Cisco routers using Cisco's Gateway Load Balancing Protocol (GLBP) - to provide our customers the utmost in uptime and performance.

All IP addressing space provided by SCG are Public IP's.

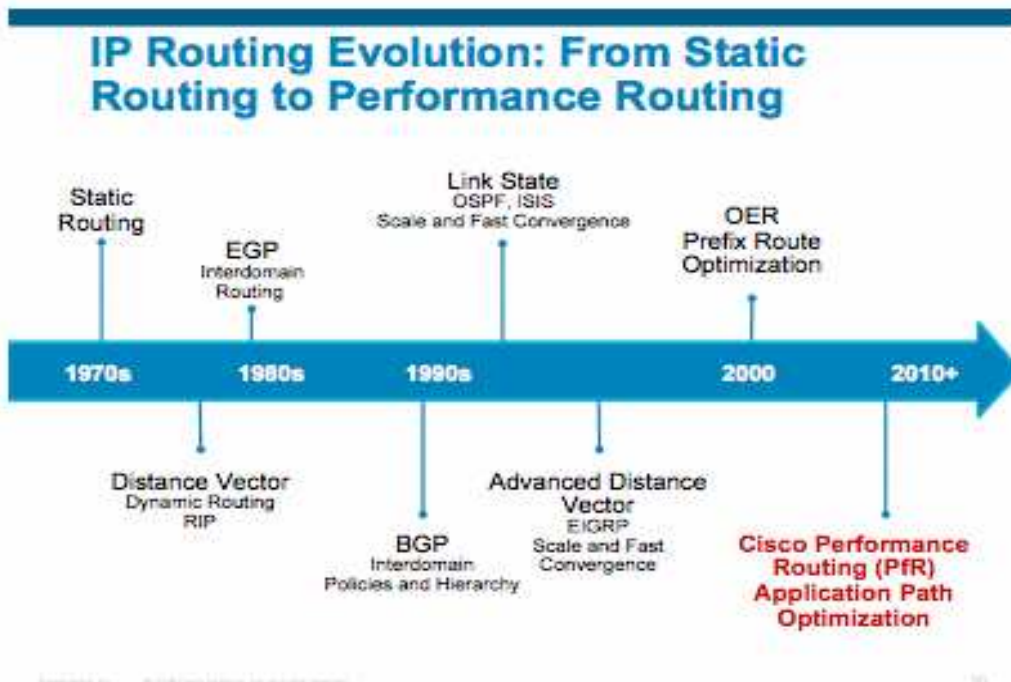
We implemented Cisco's "Performance Routing" (PfR) across our Cisco core, so the core routers are scoring the full Internet path to every active application and the core is actively moving the customer's live route and traffic REAL TIME to the "Best Path" at that moment, and as the Internet changes, so does the "Best Path". This handles brown outs, jitter (think VOIP), packet losses, black holes, congestion, performance, capacity, redundancy and more....

Performance Routing Intelligent Load Balancing

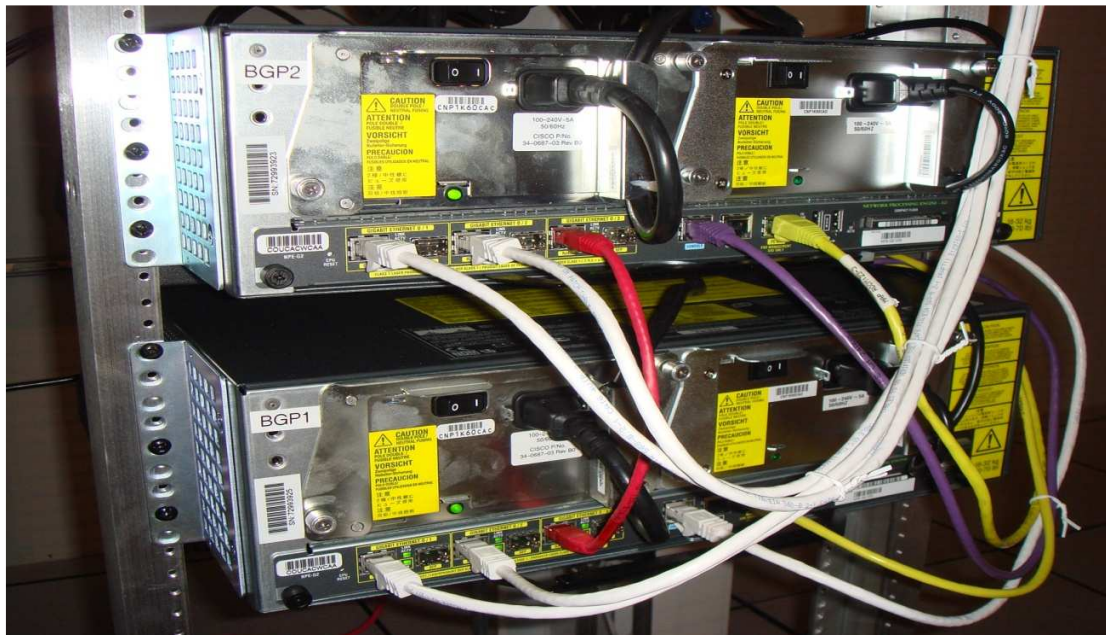
- 1) Video stream consumes a large amount of **SP Green** bandwidth
- 2) PFR moves other flows to the **SP Blue**



Cisco's performance routing is the next evolution in Internet routing. This is made possible because SCG is an IP carrier, and SCG maintains the active table of all the public routes in the entire Internet and SCG's MPLS routers negotiate with the other IP carriers to test alternate and multiple simultaneous routes to the end points. SCG's routers actively update the other IP carriers routers with new routes, to maximize performance at all times.



Pictured Below: SCG's Cisco 7206VXR-G2 routers each with 3 Gig connections to each, all with redundant power supplies from separate UPS systems, served by 4 independent power feeds, to give 7 - 9's in service. All are running performance routing, BGP4 and GLBP to manage the routing load across the routers, providing automatic N+1 router connectivity across the routing core (Customers are not tied to a unique router IP – but are routed to by a group of routers working together to again eliminate a single point of failure) each with 1 Gig memory to carry the FULL routing tables.



The SCG router core delivers the IP services to SCG's customers through Cisco 3750E stacked enterprise switches, again in an N+1 configuration. The 3750E switches have a 64 Gig backplane and provide full bandwidth delivery of 1 Gig over Cat 6 copper cables and up to 10 Gig over fiber. The 3 existing switch controllers vote on who is Master. In the event of a Master controller failure, one of the other controllers becomes Master – giving N+2 redundancy, with full redundancy on power supplies and 2 UPS feeds.

SCG provided IP is delivered over Gig Cat 6 cable, or 10 Gig fiber. The SCG standard is a GigE circuit – whether you buy 3 Meg, 5 Meg or 100 Meg, giving our customers the flexibility to burst 3 times their commit rate and a full Gig at a moment's notice. We use exclusively Cisco switches and Cisco routers because we want our customers to experience the best in service.



You can buy your IP and telecom from SCG or any provider and pay just \$50 for the cross-connect to SCG (yes, for just \$50 you get to shop and save on the expensive portion – the IP and Telecom). You can also plug into SCG's IP as a backup to your IP, as many of our customers are doing.